

Sequence # 1

Shot Description: A man walks through a meadow



Transition In: Black

Video Image: LS

Audio Recorded: None

Added Audio: Slice of ass

Transition Out: Cut

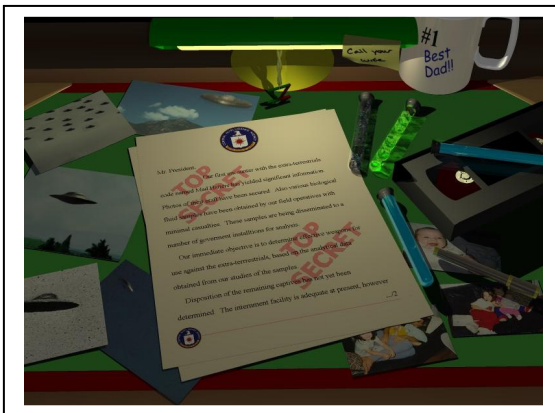
Estimated Time of Take: 15secs

Narration/Script: As we see our Remote Viewer walk through the meadow the dialogue and mellow intro comes in (Slice of ass)

---

Sequence # 2

Shot Description: Top secret files



Transition In: Cut

Video Image: CU

Audio Recorded: None

Added Audio: Slice of ass

Transition Out: Cut

Estimated Time of Take: 20secs

Narration/Script: A hand opens some classified top secret files that contain typed information on the remote viewing government experiment. Phase 1, 2 and dry run test. Various papers are waded through to provide all the info for the view to follow the narrative.



Sequence # 3

Shot Description: Picking flower #1

Transition In: Cut

Video Image: Track in or zoom to MCU

Audio Recorded: None

Added Audio: Slice of ass (end shot on 47secs total)

Transition Out: Cut

Estimated Time of Take: 12secs

Narration/Script: We see our viewer pick a flower. He looks normal



Sequence # 4

Shot Description: Dry swimming

Transition In: cut

Video Image: Low to ground CU

Audio Recorded: None

Added Audio: Slice of ass

Transition Out: cut

Estimated Time of Take: 16secs

Narration/Script: As the drum and bass kicks in we cut to the Remote Viewer dry swimming on the ground, moving around the streets at normal speed. The camera is looking front on at the Viewer tracking back at the same speed. (idea ! possible helmet cam perspective like tobogganing)



Sequence # 5

Shot Description: Picking flower #2

Transition In: Cut

Video Image: MCU

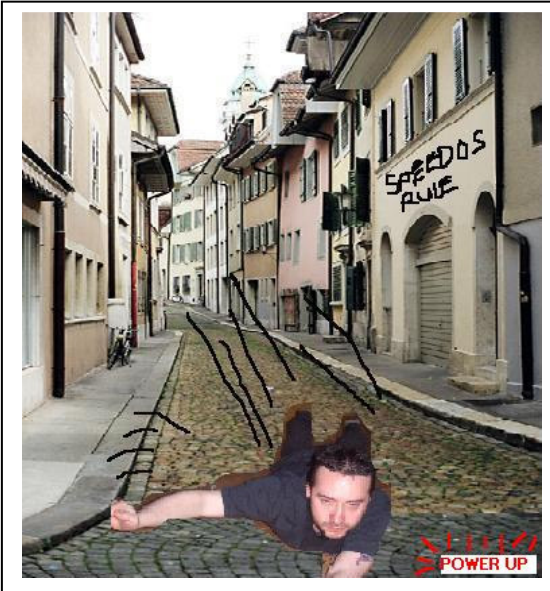
Audio Recorded: None

Added Audio: Slice of ass

Transition Out: Cut

Estimated Time of Take: 3secs

Narration/Script: On the trippy beat at 1.06 we cut to the Remote Viewer picking flower #2. He looks normal



Sequence # 6

Shot Description: Dry swimming x20 speed

Transition In: Cut

Video Image: Low to ground CU

Audio Recorded: None

Added Audio: Slice of ass

Transition Out: Cut

Estimated Time of Take: 3secs

Narration/Script: Cut to the Remote Viewer dry swimming on the ground, moving around the streets at x20 speed. The camera is looking front on at the Viewer tracking back at the same speed. We see a "power up" indicator in the bottom right of the screen.





Sequence # 7

Shot Description: Picking flower #3

Transition In: Cut

Video Image: MCU

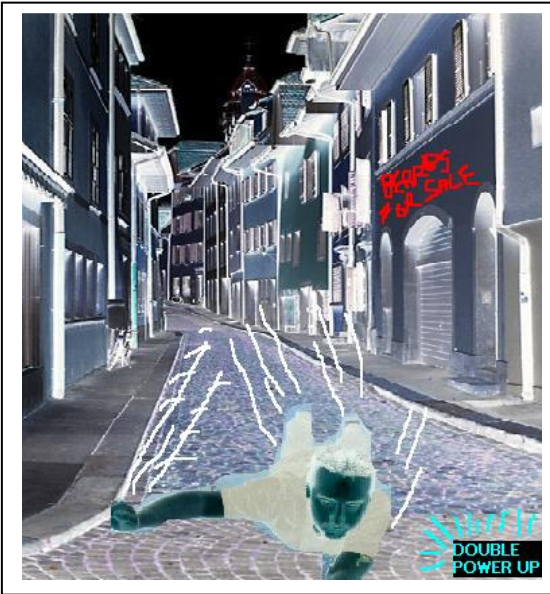
Audio Recorded: None

Added Audio: Slice of ass

Transition Out: Cut

Estimated Time of Take: 3secs

Narration/Script: On the trippy beat at 1.12 we cut to the Remote Viewer picking flower #3



Sequence # 8

Shot Description: Dry swimming x40 speed

Transition In: Cut

Video Image: Low to ground CU

Audio Recorded: None

Added Audio: Silce of ass

Transition Out: Cut

Estimated Time of Take: 10secs

Narration/Script: Cut to the Remote Viewer dry swimming on the ground, moving around the streets at x40 speed. The camera is looking front on at the Viewer tracking back at the same speed. We see a “double power up” indicator in the bottom right of the screen.



Sequence # 9

Shot Description: Montage

Transition In: Cut

Video Image: 4 shots CU/ECU

Audio Recorded: None

Added Audio: Slice of ass

Transition Out: Cut

Estimated Time of Take: 14secs

Narration/Script: A montage of 4 clips lasting 2secs each then repeated with shorter and shorter screen time giving a burst of frames to fill the 14 secs. The Remote Viewer is lying on a bed. A syringe is brought up to his temple. An electro device is attached to his brain. A thumb lifts his eyelid. An ECU of a dog possibly alsation, but blurred and handheld so we just know it is an animal of some kind.

---



Sequence # 10

Shot Description: Picking flower#4

Transition In: Cut

Video Image: MCU

Audio Recorded: None

Added Audio: Slice of ass

Transition Out: Dissolve

Estimated Time of Take: 9secs

Narration/Script: On the trip beat at 1.36 the Remote Viewer turns in slow mo to the camera with a flower in his hand. His eyes are blacked out. He smiles and we see his teeth are sharpened.



Sequence # 11

Shot Description: Fish tank

Transition In: Dissolve

Video Image: MCU

Audio Recorded: None

Added Audio: Slice of ass

Transition Out: Cut

Estimated Time of Take: 3secs

Narration/Script: On the clarinet at 1.45 we have a medium close up of the Remote Viewer on a beach releasing petals from his hands (slow mo) into a fish tank full of dolls heads.



Sequence # 12

Shot Description: Wide shot of fish tank

Transition In: Cut

Video Image: RM/fish tank/beach

Audio Recorded: None

Added Audio: Slice of ass

Transition Out: Fade to black

Estimated Time of Take: 5secs

Narration/Script: Cut to the final shot. A wide shot in continuance of Seq#9. We see the remote viewer standing over the fish tank on the beach with the sea behind him (slow mo).